

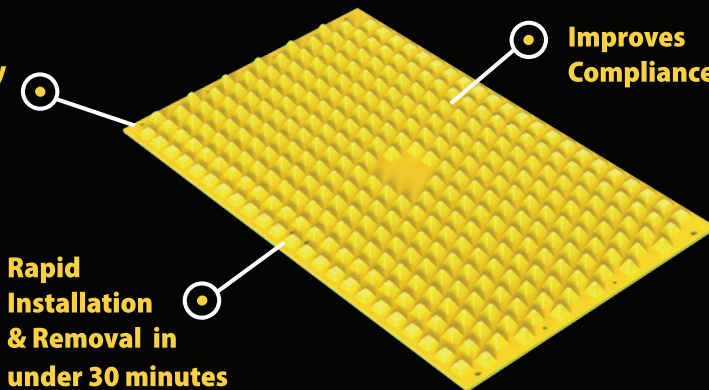


## TRACKOUT CONTROL ENTRANCE

The FODS Composite Trackout Control Mats can be used as a temporary or semi-permanent anti-tracking solution to prevent offsite tracking and facilitate site compliance. The design of the system provides a highly visible access point that prevents sediment erosion from entering roadways, and reduces fugitive dust and stormwater contamination. Mats can be anchored to asphalt, concrete or any substrate. The surface of each mat is covered with raised pyramids that actively deform tire treads, trapping sediment and debris at the base of the pyramids before it can leave the site - without damage to the tire.

## REUSABLE FOR 10+ YEARS

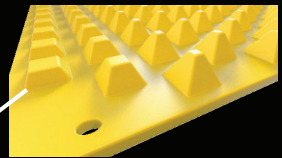
Effectively  
Cleans  
Tires



Improves  
Compliance

Rapid  
Installation  
& Removal in  
under 30 minutes

Built-in  
Ramp



### Specifications

Mat Size: 12'(w) x 7'(l) x 3/4"(h)  
Pyramid Size: 2 7/8" (h)  
Mat Weight: 420 lbs.  
Lifespan: 10+ years

## EFFECTIVE | DURABLE | NPDES COMPLIANT

- Increased Effectiveness at Reducing Site Trackout
- Economical/Reusable
- Portable/Reduces Waste
- Crush Rating of 2.8 Million lbs.
- Excavation Not Required
- Chemical Resistant/UV Stable
- Rockless/Easy to Clean
- Made in the USA/Recyclable 🇺🇸

# INDUSTRIES



● Industrial Steel Plant



● Batch Plant



● Industrial Gypsum Plant



● Quarry



● Mining



Waste Transfer Station

## END USERS OF FODS

- Heavy Civil Construction
- Land Development
- Electrical Power-line
- Mining
- Urban Construction/Industrial Manufacturer
- Energy Exploration
- Landfill & Waste Management
- Forestry
- Residential Construction
- Oil & Gas Pipeline
- Education Infrastructure
- Rail
- Airport Facilities

## COMMON SUBSTRATES & LAYOUTS

FODS TRACKOUT CONTROL SYSTEM should be installed near the site exit point, as close to the location where vehicles enter the roadway as safely as possible. FODS mats should not be installed at a low point on the site where water will pool.

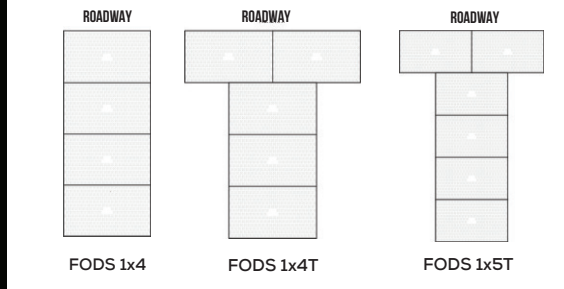
### MULTI-TERRAIN



- Excavated Soil (Min CBR: 4)
- Un-Excavated Soil
- Asphalt
- Concrete



### Common Configurations



A smart ROI, low long term cost system that configures to any exit.



Alternating pyramids proactively prevent trackout.